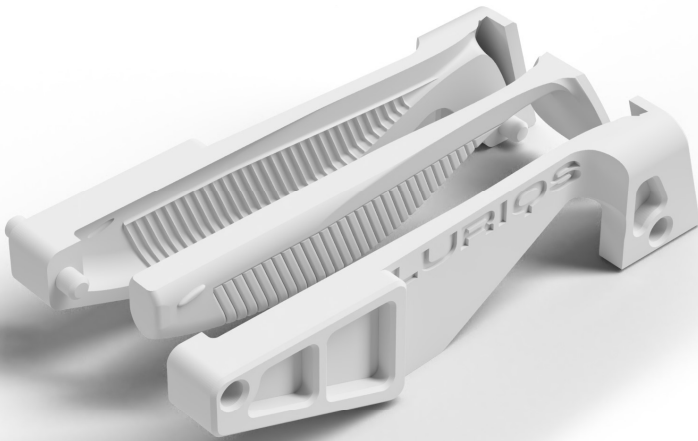


MANUAL

CREATE YOUR OWN SOFTBAITS!



Everything seems possible when maximum inspiration flows into your lure design.
With our range, you can cast your own softbaits!

LURIQS

EQUIPMENT

To cast your own softbaits, you need a few items. However, most of them are included in our bundle. You need:

- Casting Mold
- Lure Gum
- Colors
- Glitter
- Stirring stick
- Injection
- Clamps

Not included in the bundle:

- Mixing cup
- Scale

PREPARATION

1. Choose a suitable work area. Cover it with household paper, old newspapers or baking paper, this will save you time when cleaning.
2. Also prepare a heat-resistant surface. A baking tray is ideal for this. We recommend using baking paper to protect the baking tray.
3. Preheat the oven to 80° Celsius (top/bottom heat).
4. By heating in the oven, the hardening of the lure gum can be significantly accelerated.
5. You can also let the lure gum harden at room temperature. However, this takes longer. See section 'Hardening' below (page 6).
6. Put the two halves of the mould together and fix them, e.g. with clamps.
The mould must hold together properly, otherwise lure gum may leak out of the mould during casting and affect the result.
7. important note: closed mould system (injection with syringe):
Attach the clamps so that the opening for the syringe is facing vertically upwards when you place it on the baking tray, for example.
This prevents lure gum leaking out of the mould after casting.

INSTRUCTIONS

LURE GUM

Take a scale or a small measuring cup and mix the Lure Gum in a 1:1 ratio. E.g. 5 g of component A and 5 g of component B. Alternatively, the Lure Gum can also be portioned and mixed directly in the syringe. Then stir the two components together very well. If air bubbles form, they can be almost completely removed by tapping the cup on a hard surface.

Tip: Only mix as much lure gum as you need for each casting. You can find the recommended amount of Lure Gum per casting in the product text of the moulds on our website. The Lure Gum can only be processed at room temperature for approx. 6 minutes. After this time, it begins to harden and can no longer be used.

COLORS

Add the chosen colour drop by drop until you have the desired nuance.

A small drop is usually enough to colour the lure gum properly !

GLITTER

Add the glitter until you have reached the desired intensity.

GLOW IN THE DARK PIGMENT

If you are using the glow in the dark pigment, we recommend that you do not use any additional colours. As the glow in the dark pigment is actually white during daylight and only glows in the chosen colour when it gets dark, this can result in an uncontrolled mixture of colours. But of course you can

experiment and create unique colour/glow combinations! We recommend a mixing ratio of 1:7, i.e. 1 unit of powder to 7 units of Lure Gum, to produce your glow in the dark colour.

Example: Mix 1 g of glow pigment with 7 g of Lure Gum.

Formula: Weight of the lure gum divided by 7.

TIP

Measure the lure gum, glitter, colours and/or glow in the dark pigment each time beforehand and write this down as a recipe.

This will allow you to produce the baits exactly the same again!

CASTING WITH CLOSED MOULD SYSTEM

Fill the ready-mixed lure gum into the open syringe and close the syringe with the pressure cap. Then slowly inject the rubber through the opening into the mould. As soon as you feel resistance in the syringe and the rubber pushes through the mould slightly, the mould is full. Then place the mould vertically on the baking tray so that the opening of the mould is facing upwards. This prevents lure gum leaking out of the mould after casting.

CASTING WITH OPEN MOULD SYSTEM

Pour the ready-mixed lure gum directly into the mould.

Important: It can sometimes take a moment until the lure gum has flowed into all the small gaps in the mould.

Be patient. Keep pouring into the mould until it is well filled.

HARDENING

Place the poured mould in the oven.

Heating in the oven will accelerate the hardening of the lure gum significantly. Alternatively, you can let your bait harden at room temperature.

DURATION OF HARDENING

At 23°C (room temperature): approx. 60 min.

At 80°C: approx. 8 min.

DEMOULDING THE SOFTBAITS

Check whether the rubber has hardened and remove the mould from the oven.

Important: Always wear heat-resistant gloves to avoid injuries! Open the mould slowly and carefully remove the bait from the mould. Patience is required here! Open the mould very carefully so that the bait does not be damaged by tearing out of the mould.

Hint: If the bait is not yet completely hard, place the mould in the oven again.

Afterwards, place the bait on a paper towel or old newspaper. Cut off the remaining rubber using a cutter or scissors.

Voilà!

Your homemade softbait is complete!

Didn't get your first cast perfect?

No worries, practice makes perfect!

We wish you lots of fun with your self-made softbaits!

TIGHT LINES !

www.luriqs.ch



@luriqs.ch



@luriqs.ch



@luriqs.ch

LURIQS